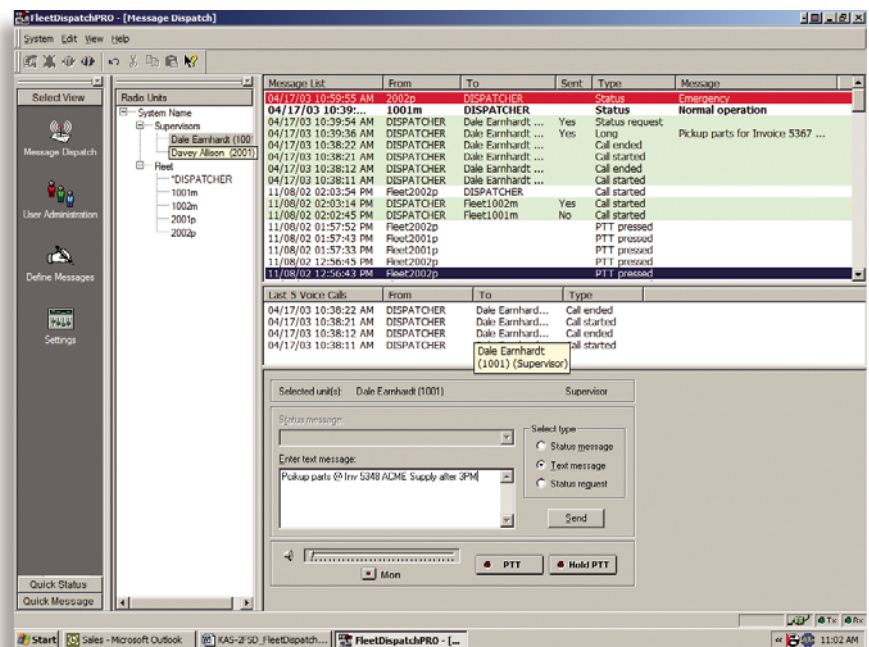


KENWOOD

KAS-2FSD FleetDispatchPRO

FleetSync® Messaging Software

FleetDispatchPRO is an easy to use FleetSync® messaging and PTT ID dispatch software for a desktop computer connected via the FleetSync® PC Serial Interface to a Kenwood 80-Series base/control station mobile. It supports FleetSync® PTT ID, Status Messaging and Short/Long Text messaging enabling a dispatcher to send, receive and log all message types to/from a mobile and portable fleet.



FEATURES

- **Base Mobile Compatibility**¹
80-Series
- **Fleet Compatibility**²
80/90/150-Series
80/90/150-Series & KDS-100
62G/60G/63G-Series & KDS-100
- **Windows® 98/Me/NT/2000/XP**
- **Easy to Use GUI**
- **Mouse & Keyboard Control**
- **Supports 4000 FleetSync IDs**
- **FleetSync® Call Logging**
- **PTT ID**
- **Status Messaging**
- **Short & Long Text Messaging**
- **Selective Calling**
- **Emergency Display & Alert (ST 99)**
- **Emergency Man-Down Display & Alert (ST 98)**
- **Emergency Mode Off (ST 88)**
- **Horn Alert (ST 89)**

1. Release version 1.07 only supports the FleetSync® PC serial interface of the 80-Series mobiles.

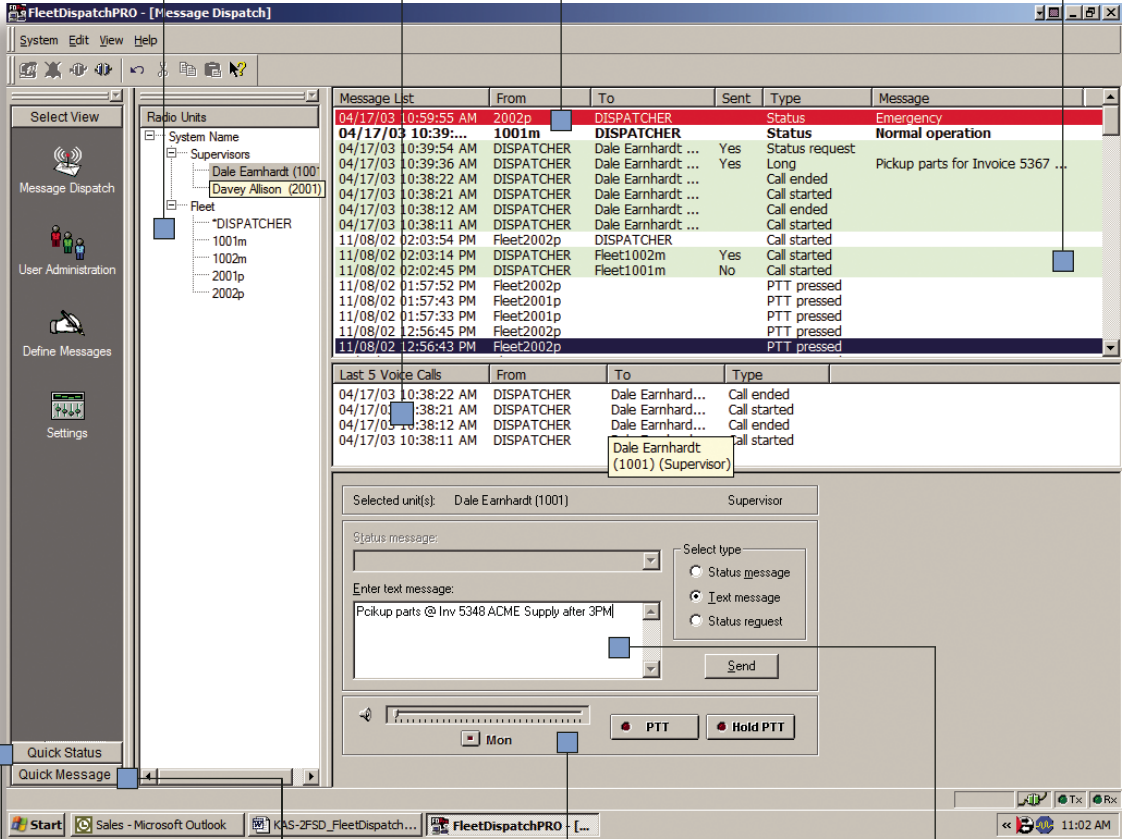
2. A Fleet radio is any FleetSync® compatible portable, mobile or KDS-100 / mobile combination. 90-Series radios encode FleetSync® PTT ID & Emergency Status only.

ID LIST
4000 FleetSync® IDs

PTT ID WINDOW
Last 5 Voice Call
Quick List

**EMERGENCY (ST 99)
EMERGENCY MAN-DOWN
(ST 98)**
Red Flashing & Audible Alert

CALL LOGGING
PTT ID
Status Messages
Short Text Messages
Long Text Messages
FleetSync® Selective Calling



QUICK STATUS MENU
Most Often Used
Statuses

QUICK MESSAGE MENU
Most Often Used
Text Messages

VOICE CONTROL
Volume, PTT, Hold PTT
& Monitor

DATA MESSAGING CONTROL
Status Message Menu
Status Request
Short & Long Text Message
Edit Box

Technical Specifications

Computer System Requirements	Mobile Station Requirements
Windows® 98/Me/NT/2000/XP OS / Pentium II 450 MHz or better 10 MB of hard disk drive space / 64MB RAM / CD ROM Drive / Mouse Super VGA color monitor or better / 1024 x 768 or higher resolution setting 1 Serial Port (for KCT-31 connection) / 1 Parallel Port (for hardware key) / Single PC use only Package Contents: CD ROM, Instruction Manual, Hardware Key	80-Series Mobile (Version 2 radio or later) KMC-9C Base station Desktop Microphone recommended FleetSync® Enhanced Enabled (already factory installed except for 800/900 MHz products) Installed KCT-31 PC Serial Interface Cable